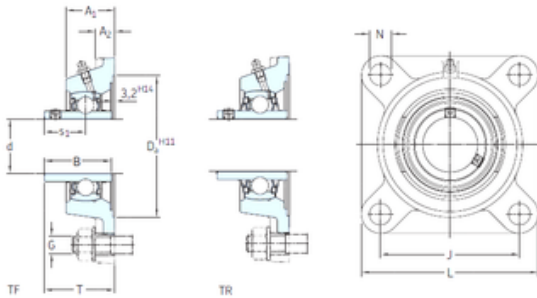




Bearing Driveshaft do Brasil

SKF FY 3/4 TF bearing units

Bearing No. FY 3/4 TF



FY 3/4 TF Bearing 2D drawings and 3D CAD models

| | |
|-------------------------------|----------------------------|
| Bore Diameter | 19.05 mm |
| Width | 31 mm |
| d | 19.05 mm |
| s1 | 18,3 mm |
| A1 | 29,5 mm |
| B | 31 mm |
| G | 10 mm |
| J | 63,5 mm |
| L | 86 mm |
| T | 37,3 mm |
| A2 | 11 mm |
| Weight | 0,61 Kg |
| Basic dynamic load rating (C) | 12,7 kN |
| Basic static load rating (C0) | 6,55 kN |
| Fatigue load limit (Pu) | 0,28 |
| Category | Flange Block Bearings |
| Inventory | 0.0 |
| Manufacturer Name | SKF |
| Minimum Buy Quantity | N/A |
| Weight / Kilogram | 0.59 |
| EAN | 7316577754820 |
| Product Group | M06110 |
| Number of Mounting Holes | 4 |
| Mounting Method | Set Screw |
| Housing Style | 4 Bolt Square Flange Block |
| Rolling Element | Ball Bearing |



Bearing Driveshaft do Brasil

| | |
|---------------------------------------|---|
| Housing Material | Cast Iron |
| Expansion / Non-expansion | Non-expansion |
| Mounting Bolts | 3/8 Inch |
| Relubricatable | Yes |
| Insert Part Number | YAR 204-012-2F |
| Seals | M Seal |
| Housing Configuration | 1 Piece Solid |
| Pilot Configuration | No Pilot |
| Inch - Metric | Inch |
| Long Description | 4 Bolt Square Flange Block; 3/4" Bore; 3-1/2" Bolt Circle; 2-1/2" Bolt Spacing; 1 Piece Solid; Set Screw Mount; Cast Iron; Ball Bearing; 1-7/32" Length Thru Bore; Relubricatable; M |
| Other Features | Single Row Standard Duty Wide Inner Race Open End Has Flinger Y Bearing |
| Category | Flange Block |
| UNSPSC | 31171501 |
| Harmonized Tariff Code | 8483.20.40.40 |
| Noun | Bearing |
| Keyword String | Flanged |
| Manufacturer URL | http://www.skf.com |
| Manufacturer Item Number | FY 3/4 TF |
| Weight / LBS | 1.3 |
| Bore | 0.75 Inch 19.05 Millimeter |
| Cartridge Pilot Diameter | 0 Inch 0 Millimeter |
| Cartridge Pilot Depth | 0 Inch 0 Millimeter |
| Nominal Bolt Circle Diameter Round | 3.5 Inch 90 Millimeter |
| Bolt Spacing | 2.5 Inch 63.5 Millimeter |
| | |



Bearing Driveshaft do Brasil

| | |
|--|----------------------------------|
| Length Thru Bore | 1.219 Inch 30.96 Millimeter |
| Housing material | Cast iron |
| D_a | 68.3 mm |
| D_{b1} | 57 mm |
| D_{b2} | 63 mm |
| A | 29.5 mm |
| A_1 | 11 mm |
| A_3 | 3.2 mm |
| A_5 | 18.5 mm |
| N | 11.5 mm |
| s_1 | 18.3 mm |
| R_G | 1/4-28 UNF |
| R_1 | 20.5 mm |
| D_N | 6.5 mm |
| SW_N | 7 mm |
| G_N | 1/4-28 SAE-LT |
| J_6 | 74 mm |
| J_7 | 16 mm |
| N_4 | 4 mm |
| Basic dynamic load rating C | 12.7 kN |
| Basic static load rating C_0 | 6.55 kN |
| Fatigue load limit P_u | 0.28 kN |
| Limiting speed | 8500 r/min |
| Mass bearing unit | 0.55 kg |
| Thread grub screw G_2 | 1/4-28 UNF |
| Hexagonal key size for grub screw N | 3.175 mm |
| Recommended tightening torque for grub screw | 4 N · m |
| Recommended diameter for attachment bolts, mm G | 10 mm |
| Recommended diameter for attachment bolts, inch G | 0.375 in |



Bearing Driveshaft do Brasil

| | |
|-----------|----------------|
| Housing | FY 504 M |
| Bearing | YAR 204-012-2F |
| End cover | ECY 204 |